

Contents

Introduction	v
Nouns	1
Verbs	8
Nouns and Verbs	15
Analogies	18
Adjectives	22
Animals	24
Science	26
Time of Day	29
Music	30
Maps	32
The Body	33
Sports	34
People	35
Places	36
Morphemes and Suffixes	37
Prefixes	41
More Suffixes	47
More Morphemes	51
Synonyms	52
Homophones	54
Words with Multiple Meanings	58
Answer Key	66
English Translation of Spanish Directions.....	75
Index	83

Contenido

Introducción.....	vi
Sustantivos.....	1
Verbos.....	8
Sustantivos y verbos	15
Analogías	18
Adjetivos.....	22
Animales	24
Ciencia	26
Hora del día.....	29
Música.....	30
Mapas	32
El Cuerpo	33
Deportes.....	34
Personas	35
Lugares	36
Morphemas y Sufijos.....	37
Prefijos	41
Más Sufijos.....	47
Más Morphemas	51
Sinónimos	52
Homófonos.....	54
Palabras con múltiples significados	58
Las Respuestas	66
Traducción al inglés de las instrucciones en español.....	75
Índice.....	83

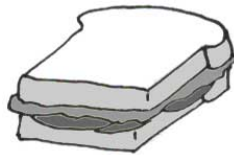
Nouns * Sustantivos

Los sustantivos son personas, lugares, cosas o criaturas. Relaciona el sustantivo con su ilustración. Luego escribe una p si el sustantivo es una persona, pl si es un lugar, th si es una cosa y cr si es una criatura. La primera se hizo como ejemplo.

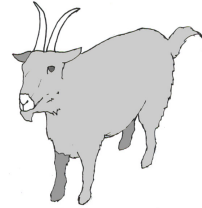
match	scarf	bear	pail	stage	empress
sandwich	witch	hanger	goat	athlete	locust



1. **match** (*th*)



2.



3.



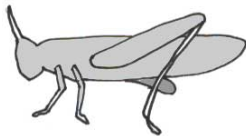
4.



5.



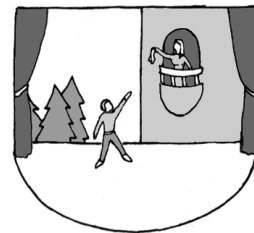
6.



7.



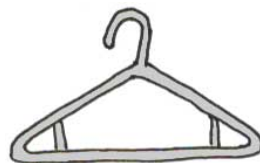
8.



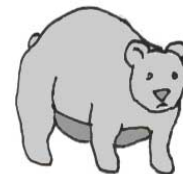
9.



10.



11.



12.

Analogyes * Analogías

Where would you find? * ¿Dónde encontrarías?

Una analogía es una comparación entre dos cosas. Use las siguientes palabras para llenar las analogías. La primera se hizo como ejemplo.

barn	court	den	stage	church
purse	pants	classroom	tree	kingdom
ring	ocean	book	field	closet

Relating Factor

1.

... is a place for ...

barn as coin as bear

horse

2.

... is a place for ...

clothes as boxer as matches

3.

... is a place for ...

diamond as locust as actor

4.

... is a place for ...

pew as patch as surfer

5.

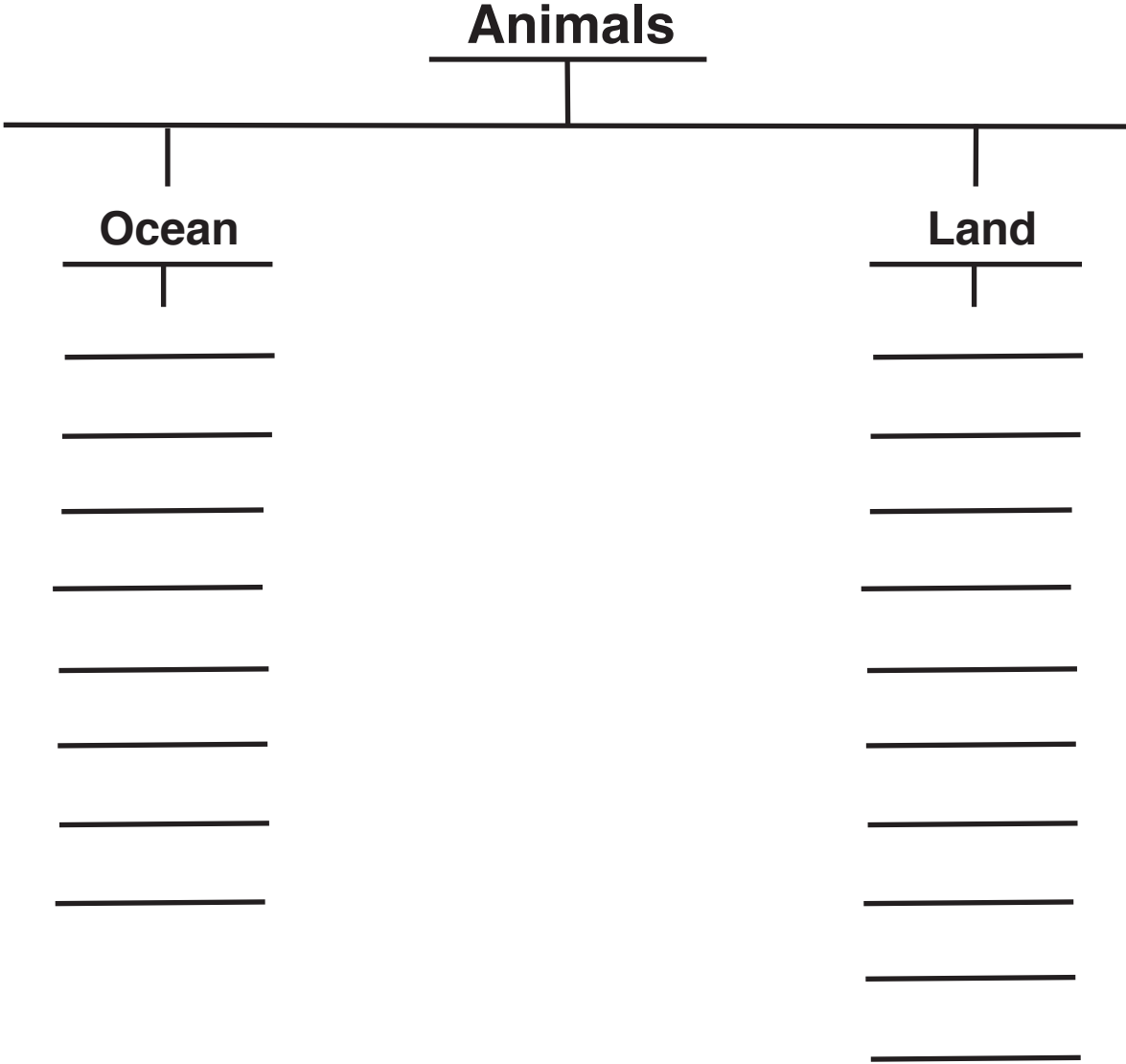
... is a place for...

teacher as judge as empress

Animals * Animales

Usa las siguientes palabras para llenar el árbol de clasificación sobre los animales que viven en el océano y los animales que viven en tierra.

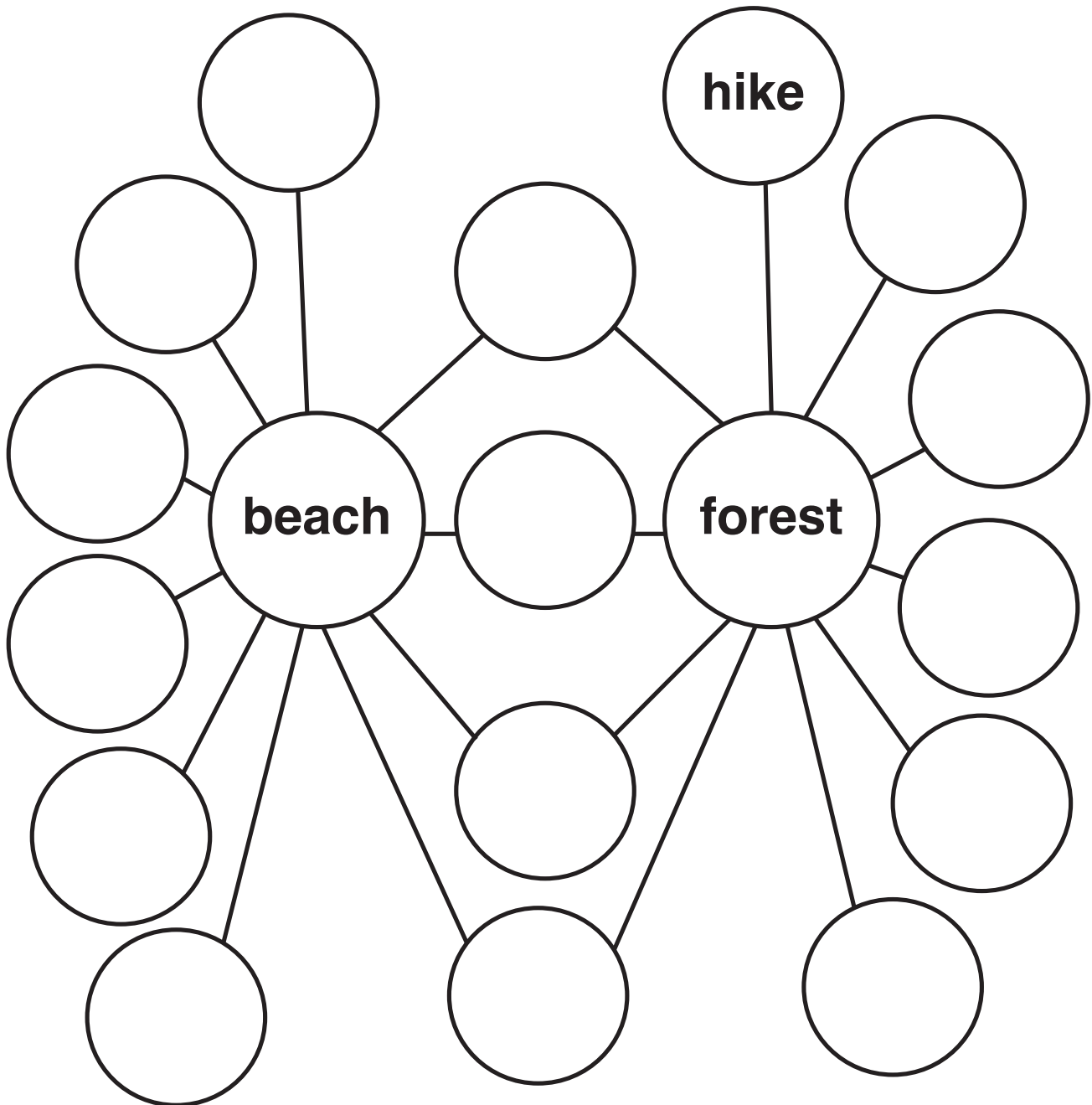
gazelles	mice	kangaroos	stingrays	dolphins	wildebeests
shrimp	hares	hyenas	squids	octopuses	squirrels
zebras	fawns	sharks	bears	whales	jellyfish



Places * Lugares

Llene la doble burbuja con las palabras que aparecen abajo. En las burbujas externas escriba las palabras que más probablemente aplican ya sea a la playa o al bosque. En las burbujas centrales conectoras escriba las palabras que se relacionan con ambos lugares. La primera se hizo como ejemplo.

hike	swim	bears	crabs
waves	birds	sea	picnics
campfire	fawns	fishermen	woods
trees	sand	rabbits	clouds



English Translation of Spanish Directions

Page 1

Nouns are persons, places, things or creatures. Match the noun with its picture. Then write a p if the noun is a person, a pl if it's a place, a th if it's a thing and a cr if it's a creature. The first one has been done for you.

Page 2

Nouns are persons, places, things or creatures. Match the noun with its picture. Then write a p if the noun is a person, a pl if it's a place, a th if it's a thing and a cr if it's a creature. The first one has been done for you.

Page 3

Nouns are persons, places, things or creatures. Match the noun with its picture. Then write a p if the noun is a person, a pl if it's a place, a th if it's a thing and a cr if it's a creature. The first one has been done for you.

Page 4

Nouns are persons, places, things or creatures. Match the noun with its picture. Then write a p if the noun is a person, a pl if it's a place, a th if it's a thing and a cr if it's a creature. The first one has been done for you.

Page 5

Nouns are persons, places, things or creatures. Match the noun with its picture. Then write a p if the noun is a person, a pl if it's a place, a th if it's a thing and a cr if it's a creature. The first one has been done for you.

Page 6

Use the nouns below to fill in the blanks. Add an s if necessary.

Page 7

Use the words below to fill in the classifying tree about which things or creatures you would find in your home or in nature. One word can be used twice.

Page 8

Verbs are action words. Every sentence must have a verb. Match the verb with its picture.

Page 9

Verbs are action words. Every sentence must have a verb. Match the verb with its picture.

Page 10

Verbs are action words. Every sentence must have a verb. Match the verb with its picture.

Page 11

Use the words below to fill in the classifying tree about different ways of cooking and different ways of moving.

Use the words from above to answer the questions.